

NP40

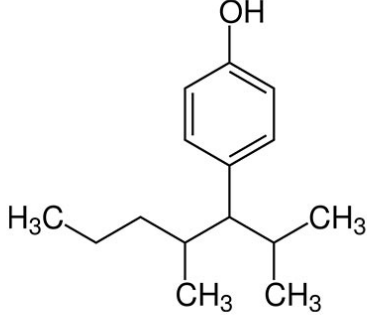
IUPAC NAME: octylphenoxypolyethoxyethanol

CHEMICAL FORMULA:

CAS NO: 9016-45-9

MOLECULAR WEIGHT:

PACKING: Bag, 25 KG



PRODUCT DESCRIPTION:

Octylphenoxypolyethoxyethanol is a versatile nonionic surfactant designed to elevate your formulations across a wide range of industries. This advanced surfactant combines the superior wetting, emulsifying, and dispersing properties of octylphenol with the excellent solubility and stability of polyethoxyethanol, resulting in a powerful additive that enhances the efficiency of various applications.

PROPERTIES:

- Superb Wetting Agent
- Enhanced Emulsification
- Efficient Dispersant
- Universal Compatibility
- Stability and Reliability

APPLICATION AREAS:

- Paints and Coatings
- Textile Industry
- Adhesives and Sealants
- Industrial Cleaners
- Personal Care Products
- Pharmaceuticals


CHEMICAL PROPERTIES

PURITY	≥ 99.0
ACID CONTENT	
MOISTURE AMOUNT	
COLOUR (APHA)	
INHIBITOR	

PHYSICAL PROPERTIES

PHYSICAL STATE	Liquid
DENSITY	1,06 g/cm ³ at 20 °C
BOILING POINT	240°C
FREEZING POINT	46°C
FLASH POINT	113 °C
VAPOR PRESSURE	1,4 hPa at 25 °C

SAFETY INFORMATION

HAZARD PICTOGRAM(S)	
HAZARD STATEMENT(S)	H315 Causes skin irritation. H319 Causes serious eye irritation
PRECAUTIONARY STATEMENT(S)	P264 Wash skin thoroughly after handling. P280 Wear protective gloves/ eye protection/ face protection. P302 + P352 IF ON SKIN: Wash with plenty of water. P305 + P351 + P338 IF IN EYES: Rinse cautiously with water for several minutes. Remove contact lenses, if present and easy to do. Continue rinsing. P332 + P313 If skin irritation occurs: Get medical advice/ attention. P337 + P313 If eye irritation persists: Get medical advice/ attention.
STORAGE CLASS	Storage class (TRGS 510): 10: Combustible liquids
STORAGE CONDITIONS	Tightly closed.
For more information, check the SAFETY DATA SHEET or get contact with us.	